

*Cedar and Sage Ranch*





---

## DEAR FRIENDS,

---

Even as the COVID-19 pandemic continued to disrupt day-to-day life, we at FACT adjusted to these challenges and had a successful and impactful year. We realized that sometimes virtual meetings can be just as productive as in-person meetings, and at times even more so. Often more people can get together via Zoom than they could in a physical meeting, and without the travel costs typically involved. That said, we did have a few fruitful in-person meetings during the past year.

Our staff was fortunate to meet together in Chicago last summer, combined with a picnic in the nearby nature reserve.

I was lucky to visit three terrific farms this year and learned from each of them. We learn so much about the needs of humane farmers when we visit them in person.

In the summer I visited the cattle farm of our Board member, Mark Bearce, in southern Wisconsin. I learned of his challenges with the drought they were experiencing.

In September I visited the chickens, turkeys, and ducks at Timberfeast Farms in Illinois, a recipient of a Fund-a-Farmer grant in 2018.

*Mark Bearce at his farm*



*Timberfeast Farm*



In the fall I visited an old colleague, Mike Sands and his grassfed sheep, cattle, and pigs at Bean Hollow Farm in Virginia, a recipient of an emergency mini-grant from FACT in 2020.



This report highlights the many ways that our expanding Humane Farming Program supported more farms than ever through grants, scholarships, webinars, mentorships, and our new finance and business training.

FACT's Safe and Healthy Food Program continued to work with partners diligently to reduce the overuse of antibiotics in animals raised for food, and to advocate for a safer and healthier food system. We had more meetings with government representatives than in previous years, even though they were all virtual.

Finally, we are working with Richman Law Policy to stop food companies from misleading consumers. We filed lawsuits against Wendy's and Cargill. You can read more about these in this report.

As our impact has grown so has our budget and staff. Since 2019, we have more than doubled our staff capacity. This growth would not have been possible without your generous financial support. FACT doesn't receive government grants, but instead relies on private contributions to keep our work fully independent.

All of us at FACT are deeply grateful for your ongoing partnership.

Sincerely,

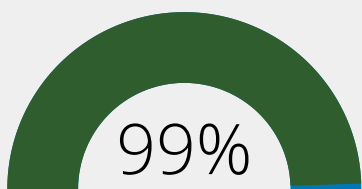
A handwritten signature in black ink, appearing to read "Harry Rhodes".

**HARRY RHODES**  
**Executive Director, FACT**

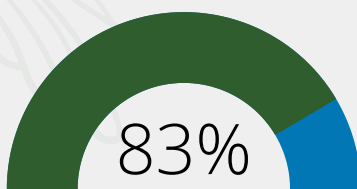
FACT's Humane Farming Program partners with and invests in individual farmers seeking to raise their animals humanely by providing them with grants, scholarships, webinars, financial training, and learning opportunities.

## IMPACT OF COVID-19 MINI-GRANTS

In 2020 we awarded more than \$95,000 in emergency mini-grants to 202 farmers in 40 US states to help them respond to challenges they faced as a result of the COVID-19 pandemic. We recently conducted an extensive impact evaluation of the program. This evaluation highlighted the significant impact made by these mini-grants, helping farmers in a time of crisis.



99%  
Of respondents said the grants helped them to address a challenge related to the pandemic.



83%  
Credited the mini-grant with having a positive impact on the financial viability of their farm business.

A majority of farmers who responded to the survey reported an increase in revenue, number of customers, profits, and visibility/public attention as a result of their mini-grant. The funds helped create opportunities for new collaborations and partnerships between farmers.

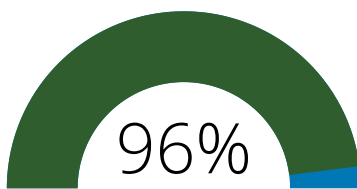
## FINANCIAL & BUSINESS TRAINING

Based upon input from farmers, in fall 2021 we launched a new financial training program for livestock and poultry producers to help their farm businesses thrive. We are partnering with the Food Finance Institute based out of the University of Wisconsin, Madison to provide free webinars, subscriptions for on-demand online courses, and two intensive Boot Camp workshops this winter.

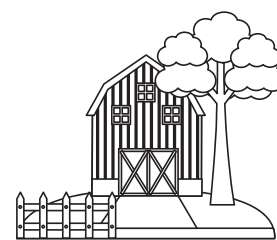


50

Farmers have enrolled in on-demand classes to date.



96%  
Of applicants selected to participate identify as one or more of the following: Black, Indigenous or Farmers of color, first generation farmers, beginning farmers, military veterans, and/or female farmers.



20

Farms have enrolled in the Financial Management Boot Camp.

FUND-A-FARMER GRANTS

In February 2021, FACT was able to award a whopping 56 grants totaling more than \$130,000 to farmers and ranchers located across 33 states. The grants were awarded for projects that improve farm animal welfare and increase the capacity of humane farmers. In solidarity with the movement to address racial inequity in agriculture, half of the grants were made to farmers who identify as Black, Indigenous or People of Color.

In March 2022, we are increasing this amount to at least \$170,000 benefitting more than 60 farms. This will be the highest number of grants we have awarded since the program started in 2012.

Muse 3 Farm received a Fund-a-Farmer grant in 2021 to improve shelter for their goats and sheep and add cross fencing to aid in rotational grazing.

The farmers purchased a variety of fencing supplies and materials with their FACT grant, and were able to construct structures that protect the goats and sheep from rain and wintery weather conditions. Upgrades to the fencing aided in rotational grazing for their sheep and goats.

Farmer Burnell Muse reports significantly improved animal welfare. The shelter provides an escape from the elements, thus enabling a less stressful environment for the animals.

“The grant has allowed us to expedite needed improvement that we would not have been able do on our own and with the impact of COVID 19 progress would have been further delayed.” - Farmer Burnell Muse

MUSE 3 FARM IN GREENSBURG, LA



CHEROKEE VALLEY BISON RANCH IN THORNVILLE, OH

Cherokee Valley Bison Ranch also received a Fund-a-Farmer grant in 2021 for watering systems to supply clean, reliable water on demand to their 50 bison on pasture.

The ranchers purchased and installed the water system with their grant funding. They are having a dry year and the completion of this project is perfectly timed as there is almost no water in the creek from which they draw water. They report both highly improved animal welfare and financial sustainability as a result of the project.

“The herd now has clean abundant water in all pastures! Happy healthy animals are faster growing animals, therefore less inputs and less money!” - Rancher Carie Starr



## HUMANE FARMING WEBINAR SERIES

FACT's webinars increase knowledge of humane farming practices and help humane farmers improve the financial success of their business.



Recent webinars have included:

- Starting a Farmers' Market – A Case Study from South Carolina.
- Cultivating Your Customers – the Secret to Higher Profits.
- Introduction to Raising Heritage Poultry.
- Lambing, Calving and Kidding on Pasture.

20 Webinars were offered in the last year.

2270 Audience members attended live sessions.

4002 Views of recordings on YouTube (as of Feb 1, 2022).

Visit our YouTube channel at

[youtube.com/user/FoodAnimalConcerns](https://youtube.com/user/FoodAnimalConcerns)

## CONFERENCE SCHOLARSHIPS

FACT offers scholarships for farmers to attend workshops, field days, conferences, and other training events to learn humane animal production methods.



65

Scholarships were awarded in 2022.



43

Different conferences and events.

86%

Of scholarship recipients said that they would not have been able to attend the conference or workshop without a scholarship from FACT.

100%

Reported increased knowledge and skills related to humane animal production as a result of conference/workshop attendance.

94%

Reported that they plan to implement some of the practices they learned about during the conference or workshop on their farm with their animals.

## HUMANE FARMING MENTORSHIP PROGRAM

Our mentorship program provides beginning farmers who wish to raise their animals humanely with technical guidance as well as encouraging them to successfully use humane practices, pursue humane certification, and foster a sense of community.



8600

Farmers are subscribed to our email list as of December 31, 2021.

19

Pairs of mentors were matched in 2021 and we have up to 25 new pairs in 2022.



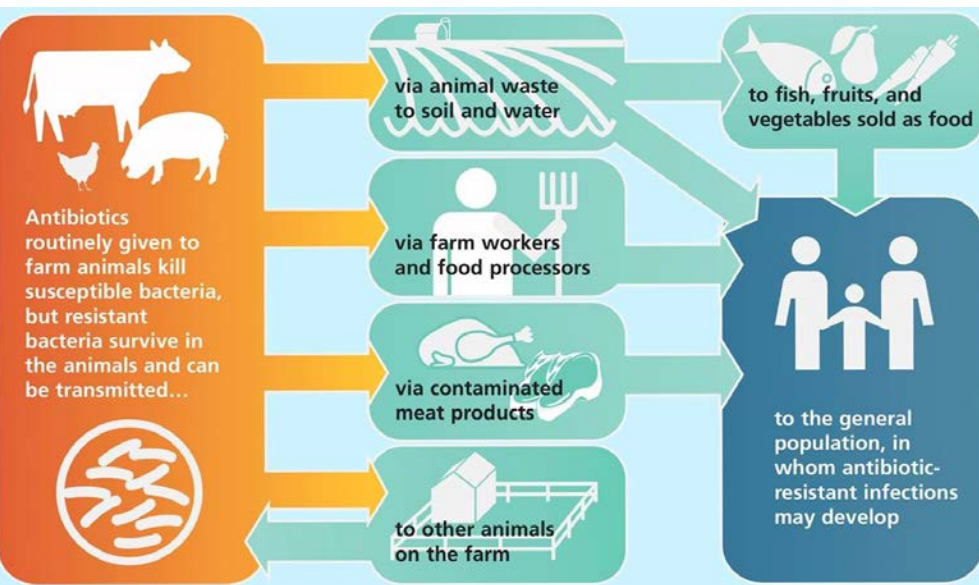


Much of FACT’s Safe and Healthy Food Program (SHFP) focuses on federal antibiotics policy. We focus on antibiotics because overuse on farms is a result of how animals are raised, and the overuse contributes to the growing crisis of antibiotic resistance. Farms and feedlots use antibiotics because it is cheaper than providing healthier conditions and better diets. This results in antibiotic resistant superbugs that make it harder to treat animals and cause difficult to treat illness in people who catch these superbugs from meat or contaminated air and water.

## FEDERAL WORK

Much of FACT’s federal work is through the Keep Antibiotics Working Coalition (KAW) which is made up of 20 advocacy organizations. KAW meets every other week to coordinate activities aimed at getting federal agencies to do more to stop the overuse of antibiotics on farms and feedlots.

Graphic to show how antibiotic resistant superbugs develop.



- KAW celebrated its 20th anniversary in October 2021.
- In addition to KAW, FACT worked last year with Pew Charitable Trusts to hold three meetings with a broader group of stakeholders known as the Antibiotics Working Group.
- In December FACT’s SHFP Associate gave a presentation to the Alliance of Nurses for Healthy Environments.

Much of FACT’s antibiotics work is focused on the Food and Drug Administration (FDA) since the FDA approves and regulates animal drugs and has protecting public health as its mission.

The FDA is part of the Department of Health and Human Services (HHS) so FACT also does outreach to HHS.

- FACT sent a letter to the HHS Secretary in May which resulted in an October meeting with the Secretary of HHS, Xavier Becerra. During the meeting FACT’s SHFP Director, on behalf of KAW, asked for more action on reducing the overuse of antibiotics on farms and feedlots. The Secretary said “we can make a lot of progress in reducing inappropriate use in animals.” FACT followed up with additional information on what could be done.
- FACT sent letters and comments to other HHS Offices such as the National Biodefense Science Board and the Institute of Health.
- FACT sent comments to the Presidential Advisory Committee on Combatting Antibiotic Resistant Bacteria (PACCARB).
- FACT met with The Centers for Disease Control and Prevention (CDC) in October to discuss monitoring for antibiotic resistant superbugs.

We ask the FDA to stop the overuse of antibiotics on farms and feedlots and to create a system to monitor how much antibiotics are being used and why they are used.

- Under pressure from FACT and allies, in June, the FDA finalized guidance that will lead to all medically important antibiotics used in animals requiring a prescription by June 2023.
- FACT action alerts targeted the FDA, resulting in the agency receiving over 25,000 comments.

FACT engages with the USDA because USDA supports research on farms and feedlots and monitors animal health. FACT’s work with the USDA this year has focused on asking the department to do more to monitor for diseases on farms and to support research on ways to raise animals with fewer antibiotics.

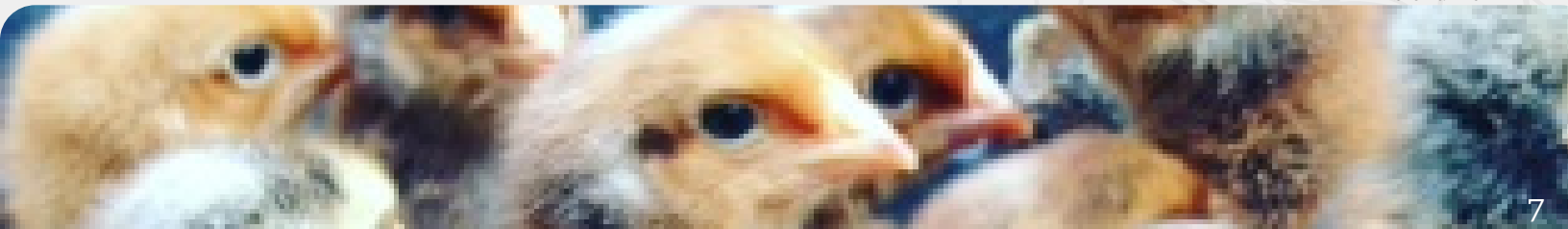
### INTERNATIONAL WORK

- October 4-16, 2021, FACT’s SHFP Director represented Consumers International at the 8th and final session of the Codex Alimentarius Task Force on Antimicrobial resistance. FACT is the only organization that has promoted the interests of consumers in all sessions of the Task Force.
- During World Antibiotic Awareness Week, November 18 to 24, FACT’s SHFP Director made two international presentations at:
  - 1) The Global Youth AMR Summit and
  - 2) Center for Science and the Environment.

FACT’s SHFP Director (Second from top left), representing Consumers International at Codex Alimentarius Task Force on Antimicrobial resistance.

Antibiotic resistance is a global problem not just a national problem. FACT shares its expertise on animal use of antibiotics and its impact on consumers in international venues.

Since 2007 FACT has represented Consumers International in the Codex Task Force on Antimicrobial Resistance which creates recommendations on how antibiotics should be used on farms and feedlots.



CORPORATE WORK

**2021 Chain Reaction VI Beef Scorecard**

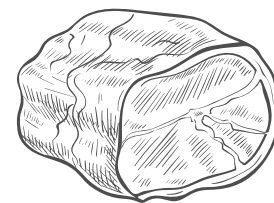
A	
A-	
C	
D	
F	

July 2021, we released the 6th Chain Reaction report that ranks restaurant chains on their policies restricting the overuse of antibiotics by their meat suppliers.

Food Companies can have a large impact on how animals are raised including requiring meat suppliers to stop overusing antibiotics. FACT engages with companies, creates campaigns to pressure them, and creates the Chain Reaction reports both to inform consumers and spur measurable action from the companies.



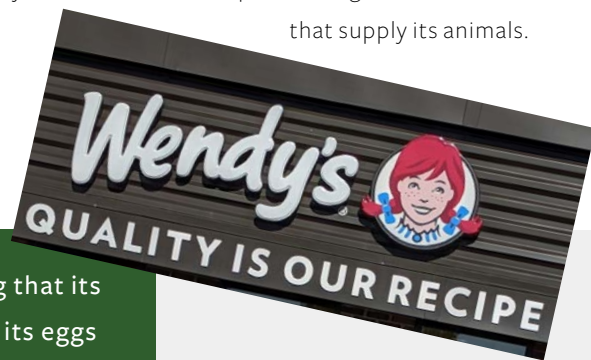
In November, we began a campaign demanding that McDonald's meet its commitment to stop the overuse of antibiotics in its beef supply.



FACT, along with a group of investors, engaged with a large pork and turkey producer to pressure the company to stop overusing antibiotics on the farms that supply its animals.

In September FACT sued Wendy's for misleading consumers by claiming that its egg products are from a leading animal welfare program, when most of its eggs actually come from chickens housed in inhumane cages.

We followed this up in December by suing Cargill, Inc for misleading consumers by falsely claiming its turkey products are raised humanely and in an environmentally friendly way by independent family farmers. Both of these cases aim to get companies to be honest about the way their suppliers raise animals so that consumers can make healthy and humane choices.



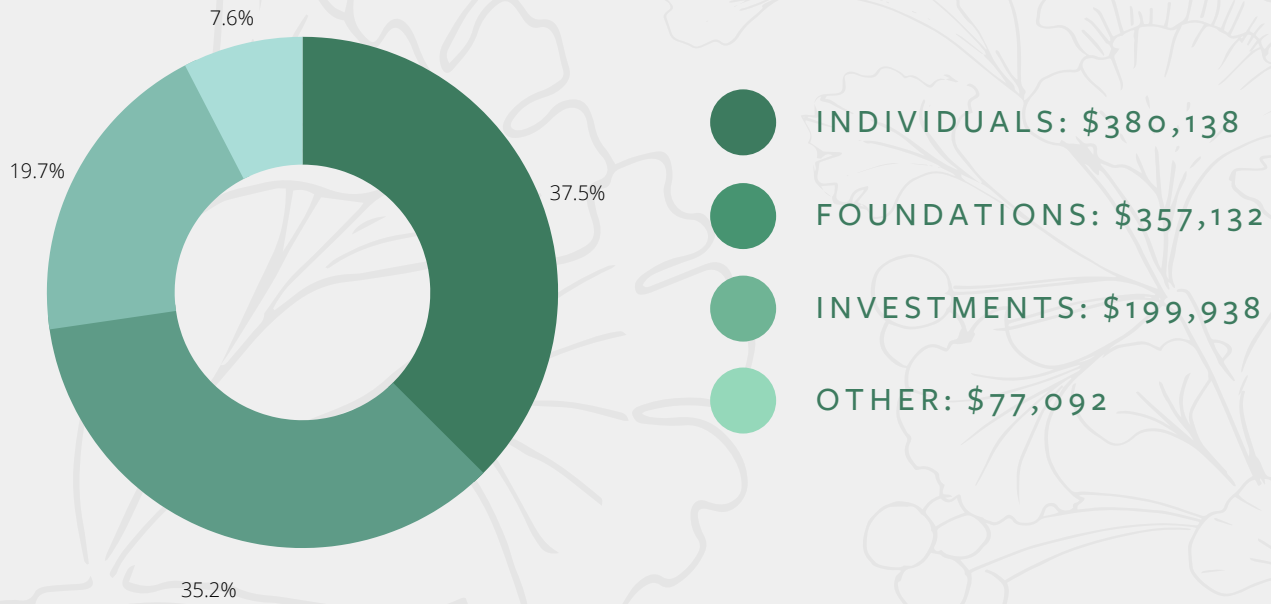
LAWSUITS AGAINST WENDY'S, CARGILL, & THE FDA

- February 2021, FACT had a victory in our lawsuit against the FDA when a federal judge rejected the FDA's request to dismiss our case against the FDA for improperly approving the beta-agonist animal drug, Exporior, that puts animal health, human safety, and the environment at risk. The case continues to work its way through the courts.
- October 2021, FACT's SHFP Director met with the FDA to discuss the animal carcinogen, carbadox.
- December 2021, FACT shared information about carbadox with Congressional offices.

In addition to antibiotic resistance, animal drugs can lead to dangerous residues that harm consumers. The focus of our work at this time is on the carcinogenic swine drug, carbadox. Despite being a known carcinogen that the FDA would like to ban, this drug is fed to over half of all pigs raised in the US.

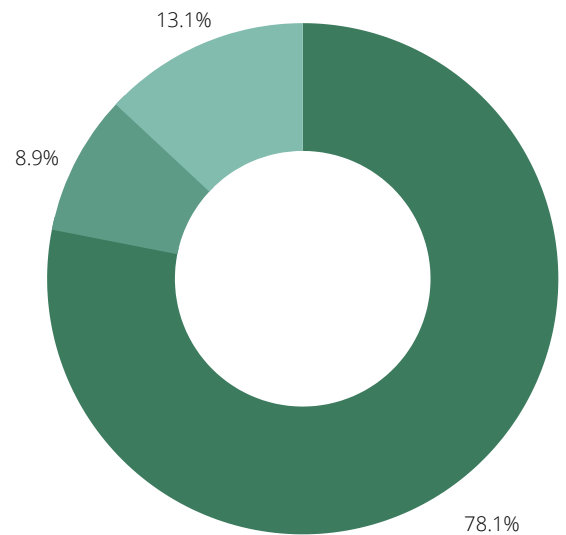


**TOTAL REVENUES: \$1,014,300**



**TOTAL EXPENSES: \$780,608**

- **PROGRAM SERVICES \$609,462**  
Humane Farming: \$316,346  
Safe and Healthy Food: \$219,671  
Program Communications: \$73,445
- **MANAGEMENT AND GENERAL \$69,241**
- **FUNDRAISING \$101,905**



**CHANGE IN ASSETS: \$233,692**



From July 1, 2020 to December 31, 2021, FACT received 2652 gifts from 1276 supporters - ensuring that we continue our work to improve farm animal welfare and safe and healthy foods. There are many ways to contribute to FACT's impact. For more ways to support FACT's work, please visit our website at [foodanimalconcernstrust.org/make-a-gift](https://foodanimalconcernstrust.org/make-a-gift).

## DONATE TO FACT



Donate to FACT by visiting our website, [give.foodanimalconcerns.org/donate](https://give.foodanimalconcerns.org/donate) or by calling us at 773-525-4952. Alternatively, you can send us a check made payable to FACT to our office at 3525 W. Peterson Ave., Ste 213, Chicago IL 60659.

## MAKE IT A MONTHLY GIFT



Monthly donors are vital to our work as they offer sustainable progress on the issues of humane farming and safe and healthy foods. A regular gift helps us keep mailing costs down so we can allocate more resources to protecting and nurturing your food, health, and community. Set up a regular gift today on our website or by calling the FACT office.

## YOUR LEGACY



As you plan your philanthropic legacy, please consider including a provision in your will that includes FACT as a beneficiary. Please contact us for more information regarding including FACT in your planned giving.

## FOLLOW US ON SOCIAL MEDIA



Follow us on social media to see our progress. You can also help us increase our online presence and spread our message further by liking and sharing our posts. See the back page for links to our social media channels.

## SUBSCRIBE TO OUR E-NEWSLETTERS



Subscribe to our e-newsletters to be the first to hear about our work and impact as well as participate in our advocacy campaigns. Sign up on our website: [foodanimalconcernstrust.org](https://foodanimalconcernstrust.org).

*Macleod's Flying Bull Bison Ranch*



# Thank you.

Three Brothers Farm

**FACT appreciates the generous support of our donors.** Without you none of our work detailed on the previous pages would have been possible. Below is a listing of donors who contributed between July 1, 2020 through December 31, 2021.

FACT respects your privacy and does not sell or distribute donor information. If you have a correction or question regarding this donor list, please contact Charlotte Isles, Development Associate, at 773-525-4952, Ext 5, or at [cisles@foodanimalconcerns.org](mailto:cisles@foodanimalconcerns.org). Please accept our sincere apology if a correction is necessary. **Thank you again for your kind and loyal support for FACT.**

## **\$10,000 and above**

Fred & Jean Allegretti Foundation  
The American Society for the Prevention of Cruelty to Animals (ASPCA)  
Scott & Roxanne Bok  
Helen V. Brach Foundation  
Butcherbox  
Ms. Deborah Carmichael  
Mr. Michel David-Weill  
Donor Requests Anonymity  
Walter and Karla Goldschmidt Foundation  
Ms. Mary Goodwyn  
Mr. Adam Leff  
The William and Charlotte Parks Foundation  
The PC Fund For Animals  
Pew Charitable Trusts  
John M. Sobrato & Timi Sobrato Fund, an advised fund at Silicon Valley Community Foundation

## **\$2,500 - \$9,999**

Hormel/Applegate  
Ms. Maria Bachich  
The E.D. Foundation  
Ms. Robin Fitelson  
Ms. Mary Gray  
Mr. John Hess  
Susan & Lloyd Kannenberg  
Mrs. Karen Kehoe  
The Ronald & Mary Ann Lachman Foundation  
Ms. Karen Langston  
LeFort-Martin Fund at The Chicago Community Foundation  
Ms. Renee Linnell  
Ms. Elaine Madansky  
Mr. Martin Myers & Ms. Deborah L. Lewis  
Ms. Darlene Oliver  
The Frank Pace, Jr. Foundation  
Ms. Elsa Parli



The Perelandra Fund at the Community Foundation for  
Greater Buffalo

Ms. Laura Rogers

Dr. Robert C. and Tina Sohn Foundation

Mrs. Gail and Mr. James Tibensky

Ms. Jill Weinstein

**\$1,000 - \$2,499**

Peter and C.W. Ballantine

Mrs. Susan Bednarski

Mr. & Mrs. William Biggs

Mr. Jeffrey Braemer

Ms. Michele Brouqua

Mr. Walter and Ms. Renate Buri

Clif Bar Family Foundation

Ms. Mary Hall Crawford

Donor Requests Anonymity

Ms. Andrea Eisenberg

Dennis Fisher

Gasser Family Fund

Mrs. Carolyn Hanson

Ms. Eve Hershkowitz

Ingrid Marian Hullman, M.D.

Mrs. Sandra Kimble

Ms. Connie Kissinger

Mr. Carl Kohls

Miss Patricia Lake

Ms. Diane Lane

Ms. Dorothy Lichtenstein

Mrs. Sandy Loomis

Margaret S. Maurin

Phil and Sherry Meeks

Ms. Robyn Meyn

Ms. E. Miller

Ms. Linda Morse

Mrs. Pamela Roeming

Ms. Janice Scheetz

The Schultz Foundation

Sentinel Pines Foundation

Dr. Jill Shriver

Ms. Patricia Southard

Mr. Burlington Willes

Mr. Richard Wood

Randy and Julie Wysong

**\$500 - \$999**

Gregg Alexander, M.D.

Mrs. Ann Anderson

Mrs. Barbara Bachner

Mrs. Pamela Baker

Dr. Kenneth Batko

Mrs. Tanya Bauer

Mr. Gordon Bear

Mr. Sanford Block

Mr. Alan Boles, Jr.

Ms. Debbie Boyd

Mr. Thomas Bryan

ChamBurn Farm, LLC

Donor Requests Anonymity

Betsy & Peter Farner

Ms. Kim Fowler-Jackson

Mr. Joseph Fritch

Ms. Susan Guyer

Ms. Katherine Hoepfner Karle

Mrs. Nancy S. Klinvex

Ms. Margaret Kroll

Sigurd Larson

Mrs. Anna Lawson

Ms. Anne M. Lewis

Ms. Gail Lukas

The Roderick and Julia MacLachlan Fund

Mrs. McLagan

Mr. and Mrs. Richard Miller

Ms. Katharine Morgan

Mr. Douglas Norseth

Mr. Chris Paranicas

Mr. & Mrs. Theodore Peyton

Mr. & Mrs. Alan Priest

Mr. Mark S. Richards & Ms. Susan E. Deskis

Ms. Tina Salandra

Raychel Schwartz

Wendy Thompson

Ms. Elisa Timmermans

Dr. Swati Toppin & Mr. William H. K. Toppin

Mr. Dan Traub

Ms. Judith Turgeon

Mrs. Christie Ulrich

Mr. & Mrs. Andries Van Dam

Kate & Marc Weinberger

Ms. Margaret Young

**\$250 - \$499**

Mr. Mark Abushady

Kathleen Aharoni and Skip Weiss

Mr. William Allen

Ms. Marilyn Bartlett

Mr. John Bender

Mr. Mark Blood

Mr. & Mrs. Roy Brady, Jr.

Ms. Karen Brodsky  
Ms. Bonnie Brousil  
Mr. & Mrs. G. Theodore Burkett  
Ms. Ann Carmichael  
Paul Chapman  
Mrs. Katherine Culp  
Ms. Jane Dallas  
Mr. David Davis  
Mr. Marc Davis  
Ms. Darryl DiGiovanna  
Donor Requests Anonymity  
Ms. Patricia Doty  
Ms. Jeannette Faure  
Mr. Adam Feldman  
Mary Gallucci  
Ms. Janice Gams  
Linda Garifal & Bob Turner  
Albert and Frances Glicksman  
The Colin Grahl and Karen Hauber Gift Fund of The U.S.  
Charitable Gift Trust  
Mr. Gary Green  
Ms. Patricia Hackbarth  
Mr. & Mrs. Hall Van Vlack  
Nancy Hammond, Ph.D.  
Mr. Donald Henley  
Mrs. Claire Herrmann  
Ms. Carla Holland  
Ms. Shoshana Holland  
Ms. Marilou Hudacek  
Mr. Alfred Johanson  
Mr. Raymond Kern  
Ms. Shari Kochman  
Mr. Robert Kramer & Ms. Tracy A. Fontao  
Ms. Judy Larson  
Ms. Nancy Lee Dolch  
Ms. Elizabeth Ley  
Miss Lorna Livingston  
Andrea London  
Christine Mackert, MD  
Mr. & Mrs. Matthew McGrath  
Carole Menser  
Ms. Kathryn Nepote  
Mr. Robert Newman  
Mrs. Janis W. Notz  
Mr. James Panichella  
Mr. & Mrs. James Pierce  
The Prasad Revocable Trust  
Eileen & John Reger  
Harry and Helene Rhodes  
Judith Rhodes  
Carol Richter

Mrs. Marcia Sailsbury  
Ms. Rena Schilsky  
Frank & Karen Schneider  
John and Kelly Shriver  
Robert B. Simon  
Mrs. Mary Spiro  
Mr. & Mrs. Larry Stites  
Pat and Gerry Stratelak  
Ms. Lorraine Tillrock  
Marla and Greg Turek  
Mr. Steven Ungar  
Ms. Diane Urban  
Mr. & Mrs. Roger VanDerlip  
Ms. Nancy Ward  
Ms. Ruth Weber  
Gail Weiner  
Ms. Brenda Wenning  
Ms. Marilyn Wentland  
Ms. Lisa Wersal  
Ms. Cynthia Williams  
Ms. Rosalie Wyman  
Steve Zahn

**\$100 - \$249**

Ms. Gayle Abbott  
Mrs. Janet Abels  
Mrs. Vicky Aldana  
Mr. & Mrs. Larry Alexander  
Ms. Dana Archey  
Ms. Lauren Arnest  
Mr. Richard Ayres  
Arye Azriel  
Ms. Eleanor Bachmann  
Mr. David Baer  
Ms. Cynthia Baker  
Ms. Melissa Barber  
Ms. Christa Barclay  
Mrs. Nancy Barrett  
Miss Lois Bayley  
Basic Options  
Mr. Mark Bearce  
Mrs. Gertrude Bennett  
Mrs. Stacy Bennett  
Siegrid Berman  
Glenn & Dolores Bjorkman  
Ms. Ethalinda Blackman  
Ms. Judith Blancalana  
Miss Kathleen Block  
Ms. Kathryn Blumenkamp  
Ms. Jennifer Bolten

Jaap Boosman, Ph.D.  
Ms. Elizabeth Booth  
Mr. & Mrs. Roger & Holly Bower  
Mr. & Mrs. Charles Bowman  
Ms. Ellen Brecher  
Miss Carolyn Breedlove  
Mrs. Rosemarie Brehm  
Mr. Peter Bret  
Ms. Cheri Bryant  
Ms. Barbara Burdan  
Ms. Patricia Cachopo  
Mrs. Linda Calhoun  
Ms. Ida Callan  
Mrs. Elisa Cantwil  
Mr. Thomas Carlson  
Miss Sandra Caron  
Ms. Maria Carrig  
Mr. Kevin Carroll  
Ms. Michele Carrotte  
Ms. Karen Caruso  
Dr. Liebe F. & Mrs. Barbara H. Cavaliere  
John Cogar, DVM  
Dolores Colgan  
Mr. Gary and Mrs. Leanne Collenborne  
Mr. Michael Collins  
Miss Cheryl Conetsco  
Mary Lou Cook  
Sarah Corbin  
Mr. Mark Crane  
Ms. Mary Ellen Crowley  
Mrs. Patricia Curnow  
Ms. Holly Darico  
R. Barton Day and Anne Reynolds Day  
Ms. Janet Delaney  
Ms. Nancy Delikat  
Ms. Pamela Dernham & Mr. Gregory Linden  
Ms. Darlene Dielle  
Ms. Donna Dinsmore  
Mrs. Judith Ditzler  
Ms. Holly Doering  
Donor Requests Anonymity  
Sharon Drake  
Mrs. Robin Einbund  
Ms. Mary Epatko  
Ms. Rosemary Erickson  
Ms. Diane Eskew  
Ettinger Lannin Charitable Fund  
Mr. Karl & Mrs. June Fenchel  
Jeanine Figur  
Robert and Kathy Finch  
Ms. Andrea Finley

Ms. Elaine Fischer  
Mr. Steven Flanders  
Jeff and Julie Forgash  
Ms. Janet Frankenfield  
Ms. Linda Friedman  
Mrs. Monalee Fritch  
Ms. Janet Fritz  
Mr. Daniel Galuska  
Ms. Cary Garton  
Mr. Eric Gershuny  
Mr. Albert Giannecchini  
Ms. Patricia Gilmartin  
Mr. Rick Gilpin  
Ms. Lynda Gotlieb  
Ms. Ellen Graff  
Mrs. Cynthia Greenberg  
Ms. Laurel Gress  
Ms. Alison Grey  
Mr. Andrew Grohe  
Mrs. Nancy Grosfeld  
Mr. Irving Grossberg  
Mr. Vincent Gupta  
Mr. & Mrs. John Haberman  
Rebecca Hagmuller  
Mr. Richard Hagstrom  
Lexie Hain  
Ms Karen Halliburton  
Ms. Norma Hamilton  
Ms. Hildegard Hammond  
Ms. Linda Hanchett  
Ivan Handler  
Ms. Nancy Harman  
Ms. Pamela Harper  
Mr. Nicholas Harrison  
Mr. Joseph Haydt  
Patti Hayes  
Carol Heflerich  
Mr. Michael Henegar  
Ms. Joyce Hennessee  
Cathryn Henning  
Ms. Kathryn Hert  
Ms. Angela Holden  
Mr. Joseph Houle  
Ms. Trudi Howell  
Alison Howlett Walters  
Mr. Ron Hubbard & Mrs. June Kuhn Hubbard  
Ms. Carol Zerbe Hurford  
Mr. Robert Hyams  
Ms. Lorraine Inzerra  
The Ishaek Trust  
Ms. Anne Johnson



Ms. Gail Johnson  
Mr. Edmund Jones  
Miss Janis Jones  
Ms Kirsten Jurcek  
Ms. Diana Kaiser  
Mr. & Mrs. Lee Kaiser-Johnson  
Mrs. Kathleen Le Fauve  
Ms. Joanne Kaplan  
Mr. & Mrs. Michael Kaplan  
Ms. Kristi Karls  
Kerul Kassel  
Ms. Lise Kastigar  
Ms. Diane Kelsey  
Ms. Jeanie Kilgour  
Ms. Elizabeth Kinahan-Schafer  
Ms. Jennie Koffman  
Ms. Christina M. Korsen  
Ms. Ita Kreft  
Ms. Klara Kurowski  
Ms. Cecelia Lance  
Ms. Marcia Lane  
Ms. Lola Langner  
Leah Lawson  
Ms. Lila Lee  
Mr. Eugene LeFebure  
Mr. & Mrs. Merlin Lehman  
Ms. Marcia Lehrman  
Ms. Micaela Levine & Mr. Thomas St. John  
Mr. & Mrs. Louis L'Heureux  
Rhita Lippitz  
Mr. Theodore Londo  
Ms. Ruth Mackler  
Ms. Diana Malcolmson  
Ms. Monica Maley  
Mr. Michael Malyak  
Richard C. Mariani Jr., DDS  
Ms. Anne Mark  
Mary B. Matthews Revocable Trust  
Ms. Patricia Matthews  
Mrs. Robert Matthews  
Mr. & Mrs. Donald McConnell  
Mrs. Beth McCormick  
Ms. Trudi McKamey  
Jo Ann McNaughton-Kade  
Mr. Wilbur Mead & Ms. Bethany Good  
Elizabeth and Brian Merrick  
Mr. Dennis Messersmith, Jr.  
Ms. Nancy Milewski  
Brent Milne  
Mr. Phillip Mitchell  
Mr. & Mrs. Thomas Mooney

Mr. H. Thomas Moore  
Ms. Susan Mueller  
Deb Muraro  
Mr. Michael Needleman  
Dorothy Nelsen Gille  
Ms. Paula Nessel  
Ms. Judith Newman  
Mrs. Tracy Niven-Fairchild  
Mrs. Eleanor Nixon  
Ms. Theresa Noll  
Mr. Charles Norton  
Ms. Vera Noyce  
Dr. & Mrs. Dan Nykaza  
Ms. Diane O'Brien  
Ms. Lorain Olsen  
Richard & Mare Olsen  
Dr. Carol O'Neil  
Mrs. Maria L. Orms  
Dr. & Mrs. Marvin Osman  
Kelly Owens  
Ms. Shelley Parr  
Suzzy Payne  
Ms. Peggy Pedersen  
Ms. Laura Penney  
Robert Pennybacker Charitable Fund, a Donor Advised  
Fund of The U.S. Charitable Gift Trust  
Mr. Jon Perrotti  
Ms. Carolyn Petersen  
Mrs. Jan Peterson  
Mr. Richard Petretti  
Ms. Jessica Philpott  
Stuart Plotkin, DPM  
Mr. Christopher Plotner  
Mrs. Teri Prokes  
Ms. Patricia Pruitt  
Ms. Ann Prusinski  
Mr. Joseph Puccio  
Heather Puckett  
Mrs. Vivian Raby  
Mr. Roland Rackauskas  
Robin Raymond  
Susan Redford  
Debbie and Bob Render  
Ms. Eileen Reznicek  
Dov and Rachel Rhodes  
Mr. Robert Rhue  
Ms. Arleen Rich  
Ms. Nancy M. Richter  
Mrs. Margaret J. Roarty  
Mrs. Lorraine Robb  
Daniel Roberts

Mrs. Joan Roberts  
Ms. Helen Robertson  
Ms. Joanne Rongo  
Miss Grace Rosenthal  
Mr. & Mrs. John Roy  
Ms. Mary Rudolph  
Mr. Stephen Russo  
Ms. Cynthia Sabin  
Ms. Jill Sage  
Mr. Donald and Mrs. Margaret Sarna  
Ms. Pamela Sasser  
Ms. Ann Satterthwaite  
Mr. Gregory Schaffer  
Ms. Joanne Schaller  
Ms. Barbara Schumann  
Mr. Alan Schwartz  
Mrs. Susan Schwartz  
Ms. Susan Scott  
Gene and Deborah Shriver  
Mrs. Margaret Silvasy  
Ms. Elizabeth Simonian  
Ms. Candace Sinow  
Ms. Emily Sityar  
Miss Nina Sklansky  
Mellonie Smicklas  
Mr. Christopher Smith & Ms. Gail D. Yashar  
Leo Smith  
Mr. Theodore Smith & Family  
Ms. Gail Soloway  
Mrs. Dolly Sparkman  
Ms. Linda Stanley  
Mr. Robert Stevenson  
Ms. Mary Stevicks  
Mr. Jan Stortz  
Timothy Strapp  
Mrs. Robert Straub  
Ms. Patricia Sullivan  
Ms. Sandra Swanlund  
Ms. Carolyn Swatsler  
Ms. Judy Tanenbaum  
Martha Teghtsoonian  
Ms. Shirley Thompson  
Ms. Marilyn Tomchaney  
Mrs. Barbara Tomford  
Rosilee and Philip Trotta  
Mrs. Beverly Trover  
Ms. Meredith Tucker  
Ms. Mary Turek  
Elizabeth Ungar  
Ms. Linda Valdez  
Delores and Robert Viarengo Charitable Fund a Community  
Foundation of Western Massachusetts

Ms. Eve Vogel  
Fred & Karen Walker  
Ms. Mary Walsh  
Kristine Weaver  
Mr. Arthur Weintraub  
Ms. Lallie Wetzig  
Pamela Whitehouse  
Maren Wilbur  
Mrs. Elinor Williams  
Mr. & Mrs. Williamson  
Ms. Julie Winslett  
Mr. Donald Wirak  
Mrs. Karin Wiseman  
Benjamn & Donna Wolf  
Mrs. Janet Wollney  
Ms. Kristin Womack  
Ms. Joycelyn Workman  
Jacki Zahn  
Mr. James Ziegelhoffer, Jr.

#### **Gifts through \$99**

Ms. Lina Accurso  
Ms. Barbara Adams  
Ms. Marsha Adams  
Mr. Steven Ald  
Mr. Michael Alexander  
Mrs. Anne-Marie Allen  
Ms. Roberta Allen  
Ms. Vickie Allin  
Tammy Allyn  
Ms. Anne Altshuler  
Mrs. Barbara Amos  
Miss Angela Anderson  
Mrs. Marketa Anderson  
Ms. Mary Andrejack-Osarczuk  
Mrs. Barbara Ankermann  
Mr. Mark Armantrout  
Mrs. Paula Arms  
Ms. Christine Amsbary  
Ms. Donna Arnink  
Mrs. Louise Athy  
Mrs. Joseph Attardo  
Mrs. Dorothea Atwell  
Ms. Shari Au  
Mr. & Mrs. James Aubuchon  
Ms. Pam Auditore  
Ms. Brenda Augustine  
Mrs. Mary Anne Augustyn  
Ms. Shauna Babcock  
Dr. Robert & Mrs. Elaine Bache

Barbara Baker  
Mr. & Mrs. Theodore Baldick  
Ms. Diana Barham  
Miss Nadine Bartholoma  
Ms. Mary Baumeister  
Mrs. Cathy Baynar  
Ms. Deborah Beck  
Mrs. Betty Bellairs  
Mr. George Benson  
Ms. Corinne Bergengren  
Mr. & Mrs. Leonard Berger  
Mrs. Amy Bernstein  
Ms. Susan Bernstein  
Mrs. Patricia Bertoldi  
Mr. Matt Bezark  
Mr. James Biancone  
Mrs. Diane Biase  
Ms. Miriam Bisbing  
Ms. Kimberly Bittner  
Ms. Laura Black  
Ms. Linda Black  
Mr. & Mrs. Barry Blank  
Ms. Dana Bleakley  
Steve Bloomfield, MD  
Mr. & Mrs. William Bock  
Mr. John Boily  
Mr. Michael Borst  
Ms. Candace Brady  
Mr. H. Paul Brandes & Ms. Katherine K. Saux  
Mrs. Debra Branitz  
Ms. Janice Breaux  
Ms. Jane Breazzano  
Mr. Jared Brenner  
Miss Jolynn Bricker  
Ms. Heather Briggs  
Mrs. Beverly Bronowski  
Ms. Karen Brown & Mr. Charles Castellar  
Ms. Penelope Brownell  
Mr. Thomas Brustman  
Ms. Anne Bryant  
Ms. Suzanne Buchanan  
Ms. Cathryn Bulicek  
Mrs. Paula Bullinger  
Ms. Kathryn Bunsick  
Ms. Patricia Burchard  
Mrs. Elizabeth Burrage  
Ms. Jean Butgereit  
Mr. Albert Buys  
Ms. Patricia Bykowski  
Nicole Byrd  
Mr. Candido Calciolari

Mrs. Renata Cameron  
Ms. Monica Campbell  
Ms. Nancy Campbell  
Shirley Cantrell  
Ms. Jeanette Capotorto  
Ms. Joanne Capozzelli  
Ms. Luciana Caranfa  
Miss Doris Carey  
Ms. Pamela Carlquist  
Ms. Emma Carlson  
Ms. Robin Carpino  
Mrs. Virginia Caulfield  
Mr. James Caumo  
Mrs. Carole Cavalli  
Mrs. H. Cavanagh  
Mr. & Mrs. Robert Cavanaugh  
Ms. Cyndi Cawthorne  
Ms. Jacqueline Chauviaux  
J. Cheatham, DVM  
Mr. John Chesarek  
Erica & Peter Christman  
Robert Chuckrow  
Miss Marie Ciaccio  
Mike Ciaccio  
Ms. Marianna Cicerchi  
Mario A Cinquino  
Ms. Cindy Clark  
Judith Clarke  
Emily Brown Clemons  
Ms. Madeleine Cohen  
Mrs. Sheila Cohen  
Mrs. Marilyn Collins  
Ms. Susan Conaway  
Ms. Vira Confectioner  
Miss Debbie Congdon  
Ms. Perdita Connolly  
Mrs. Jeanne Cooper  
Ms. Donna Cooperman  
Poppi Cottam  
Ms. Christina Cowan  
Ms. Helen Craft  
Kenneth & Sharon Craig  
Ms. Kathleen Cranwell  
Ms. Frances Cresswell  
Diane Cribley  
Ms. Mary Croslin  
Nan Crossen  
Mr. Kevin Crupi  
Ms. Gloria Culver  
Mrs. Ruth Curcio-McFalls  
Mr. Adam Curtis



Mr. Robert Cutler  
Mr. & Mrs. Michael Czajkowski  
Loni Czekalski  
Ms. Paula Daleo  
Diana & Michael Dalton  
Ms. Eileen Daniels  
Ms. Mary Davide  
Dr. Carole Davis  
Ms. Cathy Davis  
Mrs. Ann R.S. DeCarvalho  
Mr. Thomas Deely  
Marsha Define  
Ms. Irmgard Dekin  
Ms. Linda Dellaria  
Ms. Gail DeLuca  
Mrs. Jean DeMarco  
Ms. Cathy Dennler  
Ms. Rosanna DeVergiles  
Ms. Marilyn D'Honau-Crowe  
Mr. David Dicks  
Ms. Jody Dietrich  
Ms. Vera Djordjevich  
Mr. & Mrs. Joseph Donnelly, Jr.  
Donor Requests Anonymity  
Mr. & Mrs. William Dorosz, Jr.  
Miss Carol Dort  
Miss Jane Dorwart  
Ms. Leona Doyle  
Ms. Marilyn Dugger  
Philip & Lana Dunlop  
Mrs. Mary Ann Dunne  
Cheryl Eames  
Mr. David Efron  
Ms. Linda Ehgartner  
Kevin & Lisa Ehlert  
Mr. David Elfin  
Ms. Vickie Eppolite  
Ms. Janet Errico  
Ms. Rosemary Esch  
Ms. Diane Eskenasy  
Ms. Laura Farmer  
Ms. Francoise Favre  
Mrs. Karen Faxon  
Mr. Robert Fears  
Ms. Susan Feldman  
Mr. Joseph Ferraro  
Mrs. Susan Ferry  
Aixa Fielder  
Ms. Sheris Fillingham  
Donna Fine  
Ms. Christine Fischer

Debra Fiscus-Meyer  
Mrs. Marjorie Fisher  
Daniel Flaherty  
Ms. Katrin Fletter  
Robert Florio, DDS  
Ms. Karen Foley  
Ms. Barbara Foreacre  
Mrs. Peggy Franck  
Ms. Juli Frank  
Mr. Michael Frankenstein  
Mrs. Barbara Frazer  
Ms. Margareta Freeman  
Ms. Eleanore French  
Mrs. Herbert Frick  
Mr. Richard Fried  
Leslie Friedlander  
Mr. Alan D. Froehlich Jr.  
Ms. Ruth Fuchs  
Mrs. James Gaita  
Miss Susan Galotifiore  
Ms. Pauline Gambill  
Jessica Garcia-Torres  
Miss Marie Garescher  
Mrs. Karen Garone  
Shelagh Garren  
Ms. Lydia Garvey  
Miss Adele Garvin  
Ms. Helene Gasner  
Ms. Mary Gaughan  
Ms. Mary Gavin  
Ms. Jacquelyn Gavryck  
Ms. M. Gazarik  
Mrs. Katharine Geary  
Mr. & Mrs. Roger Germain  
Mr. Mark M. Giese  
Mr. John Gill  
Ms. Gay Marie Goden  
Ms. Barbara Golden  
Toni & Joseph Goldfarb  
Ms. Elaine Goldman  
Ms. Joan Goodwin  
Ms. Karen Goshaney  
Mrs. Sonya Grant  
Ms. Rosemary Graziano  
Mrs. Patricia Greeley  
Ms. Deborah Greenfield  
Ms. Judy Grimshaw  
Ms. Cyd Groff  
Ms. Beverly Grosick  
Mrs. Rolland Grote  
Mr. Carl Groth

Mrs. Ursula Gruberth  
Ms. MariKay Gruen  
Ms. Lee Grygo  
Mrs. Patricia Gunzburg  
Ms. Margaret Hadley  
Dr. Edward Hahn  
Paul and Deborah Haizman  
Mrs. Lydia Halverson  
Ms. Lisa Hamilton  
Ms. Elizabeth Hardy  
Gretchen Harper  
Mrs. Suzanne Harper  
Mrs. Mary Harris  
Mr. Richard Harrison  
Ms. Marilyn Harsin  
Ms. Linda Harvan  
Mrs. Linda Hassa  
Ms. Peggy Hatcher  
Ms. Maria Haupt-O'Donnell  
Ms. Deborah Hauser  
Mr. Kevin Hazel  
Ms. Joan Heath-Webb  
Joseph R Heckman  
Mrs. Carrie Heifner-Lach  
Mr. Kenneth Heitmann  
Ms. Helene Hembreiker  
Ms. Patricia Henderson  
Mrs. Sabine Henkel  
Ms. Susan Hercek  
Ms. Carole Herhold  
Ms. Joyce Herman  
Jeanette Heuman  
Ms. Barbara Hevener  
Ms. Royln Hiatt  
Mr. Gene Hiegel  
Ms. Nancy Higgins  
Ms. Carole Hillwig  
Ms. Lucy Hinde  
Mrs. Patricia Hofer  
Peggy Holdiman  
Ms. Elaine Holpuch  
Ms. Annette Holt Hartig  
Maureen & David Honiss  
Mr. Raymond Hood  
Mrs. Shirley Hoop  
Ms. Amy Hopkins  
Mr. Clifford Horowitz  
Katherine Hoy  
Holly Hubbell  
Ms. Frances Hycner  
Delia Isles

Mrs. Gail Jackewicz  
Mrs. Rebecca Jackson  
Mr. Oscar Jaeger  
Ms. Pamela Janka  
Nanette Jasperse  
Mr. Farrokh Jhabvala  
Mr. Andrew Johns  
Mr. Joel Johnson  
Mrs. Sharon Johnson  
Ms. Sylvia Johnson  
Miss Yvonne Johnson  
Mrs. Eugene Jonas  
Ms. Debra Jozefowicz  
Stephen Judge  
Mr. Steven Judge  
Ms. Faith Justice  
Mr. & Mrs. Harry Kaelin  
Mariko Kahn  
Ms. Mary Kain  
Mr. Edward Kallas, Jr.  
Mrs. Gustav Kane  
Mr. Steven Kaplan  
H. Karpes  
Mrs. Miriam Keating  
Ms. Yvonne Keatts  
Barbara S. Keith  
Ms. Meredith Kelly  
Dr. Joyce Kennedy  
Mr. & Mrs. Dennis Kepner  
Ms. Susan Kessler  
Ms. Kathleen Kestell  
Bruce Kiefer  
Ms. Elaine Kilow  
Amy King  
Ms. Penelope King  
Mrs. Katherine Kinoshita  
Ms. Elizabeth Kirkpatrick  
Ms. Debra Kish  
Mrs. Kathryn Klauda  
Mrs. Willa Klein Walsh  
Mrs. Evelyn Knazek  
Ms. Joan Knitaitis  
Ms. Elizabeth Koch  
Ms. Jean Koenig  
Mrs. Thomas Kokoska  
Mr. Gregory Konechy  
Mr. Edward Kosberg  
Mr. Alexander Koziell  
Mr. David Kravitz  
Michael and Noreen Kreda  
Ms. Lorna Kriss

Ms. Irene Krolis  
Ms. Julie Ann Krueger  
Mrs. Lois Kuehling  
Ms. Jennie Kwok  
Miss Maxine Labovitz  
Miss Margaret LaCaruba  
Tom & Gerry Lafergola  
Mrs. Diana Laiche  
Mr. Lloyd Lambert  
Mrs. Woody Lambert  
Mrs. Brenda Lake  
Bette Lamore  
Ms. Karen Lamparter  
Ms. Joan Landis  
Ms. Michele Landry  
Ms. Marjorie Lange  
Susan Lannin and Albert Ettinger  
Mrs. Joan Last  
Ms. Anita Lauer  
Ms. Lucianne Lavin  
Ms. Joyce Lazzara & Mr. Bennie Lazzara Jr.  
Ms. Ruth Lazarus  
Miss Janice Leach  
Mrs. June Leatherbee  
Ms. Mildred Lehrmann  
Mr. Ronald Leibler  
Elena Levine, M.D.  
Ms. Rosanne Levitt  
Mr. & Mrs. Paul Lindquist  
Ms. Barbara Lingg  
Mr. & Mrs. Edward Lipton  
Ms. Katt Lissard  
Mr. Joyce Lofredo  
Mr. Michael Lombardi  
Mr. & Mrs. Roger Londo  
Ms. Loryn Long  
Mr. Gregory Lord  
Ms. Laura Lorenzo  
Rebecca Lotsoff  
Mrs. James Luhm  
Mr. Bruce Lund  
Joan Lykins  
Ms. Patricia Lykins  
Mr. John Lynskey  
Ms. Sylvia Lyss  
Dr. Patricia Maffeo  
Alma Magdaleno  
Mr. Mark Dale Magnuson  
Mrs. Lorrie Malinowski  
Ms. Edith Mandel  
Judyt Mandel

Miss Janet Mangini  
Ms. Judith Marler  
Mrs. Karen Marr  
Mrs. Sheila Marshall  
Sarah Marshman  
Miss Ann Martin  
Miss Mary Martinu  
Ms. Patricia Marvin  
Rabbi Steven Mason  
Dr. Christine S. Winter Massie  
Ms. Margaret E. Matthews  
Mr. Michael Matuciana  
Mrs. Diane Matusiak  
Miss Margaret McCaren  
Ms. Ellen McConnell  
Ms. Anne O. McCormick  
Sharon McCormack  
Ms. Bonnie McDonald  
Mr. John McFadden  
Margaret McGinnis  
Mrs. Roberta McGlinn  
Juliane McGregor DeLuccio  
Mr. Craig McGruder  
Ms. Joan McIntyre  
Ms. Margaret McKelvey  
Margaret McKenna  
Michael & Victoria McKenna  
Mrs. Donna McNamara  
Mr. Michael McPoland  
Ms. Winifred Meahl  
Ms. Cheryl Mefford  
Mr. & Mrs. Salvatore Meli  
A. Meluso  
Ms. Erica Melville  
Ms. Agnes Mercurio  
Ms. Sharonell Merkel  
Mr. Robert & Mrs. Carolyn Metz  
Ms. Rosemary Meyers  
Ms. Paula Michalosky  
Mrs. Christina Midyette  
Ms. Frances Mika  
Ms. Laura Mikuta  
Mrs. Donna Miles  
Ms. Jerri Miller  
Mrs. Elizabeth Mitchell  
Ms. Cheri Mohr  
Mr. Edward Monjesky  
Ms. Bobbe Moore  
Mrs. Roberta Morelli  
Dr. Maxine Morrin  
Ms. Virginia Morris

Ms. Nina Mortellito  
Ms. Cynthia Moussas  
Ms. Rae Moysey  
Mrs. Alfred Muhlhauser  
Ms. Suzanne Muir  
Ms. Jane Mulraney  
Ms. Diana Multare  
Ms. Liz Myers  
Ms. Donna Neff  
Mrs. Georgia Nelson  
Mr. & Mrs. Leonard Nelson  
Mr. August C. Nerad  
Mr. & Mrs. Herbert Neuman  
Veronica Neumann  
Mrs. Shari Niedbalec  
Michael and Susan Nielson  
Ms. Nancy Norris  
Ms. Carol Novak  
Ms. Pam Nowak  
Mr. Ken Nugent  
Mrs. Deborah Nuzzo  
Ms. Anita Oakes  
Mr. & Mrs. Theodore Obenchain  
David & Maria O'Donnell  
Ms. Basha Oka Botnick  
Mr. Jesse Okie & Ms. Mary Harrington  
Ms. Joyce Olsen  
Dr. Caroline Olson  
Ms. Jennifer Oppenheim  
Roger and Carol Oram  
Ms. Charlotte Overbury  
Mrs. Margaret Oyler  
Ms. Patricia Packer  
Ms. Jane Paige  
Ms. Susan Painter  
Mrs. Constance Palco  
Mr. Merrill Paletz  
Mr. Larry Palmer  
Mr. William Paradise  
Ms. Dottie Parcheski  
Chelsea Parraga  
Ms. Susan Parpart  
Ms. Barbara Passalacqua  
Ms. Nancy Pellatt  
Ms. Diane Pena  
Ms. Diana Peragallo  
Mr. Richard Pereira  
Ms. Eileen Perfrement  
Ms. Mary Perhosky  
Ms. Joan Persinger  
Charles Peters

Ms. Nancy Peterson  
Ms. Yvonne Peterson  
Ms. Jean Petix  
Ms. Victoria Pettey  
Ms. Suzanne Peugeot  
John Pfeiffer  
Ms. Gloria Phillip  
Ann Phoenix  
Kathleen Pittman, DVM  
Ms. Helen Plummer  
Ms. Cathy Poellet  
Ms. Janeene Porcher  
Ms. Misty Potter  
Mrs. Kris Pottharst  
Ms. Joanne Pounds  
George & Carmella Powell  
Mr. Neil Price  
Ms. Penelope Prochazka  
Miss Carol Puchyr  
Ms. Parthenia Puckett  
Ms. Ruth Rachel Quesada  
Mr. & Mrs. John Quinn  
Ms. Grace Ramus  
Dr. Mary Lou Rane  
Mrs. Diann Rankin  
Mrs. John Rapp  
Ms. Joan Rathbone  
Mrs. Lilly Rathe  
Virginia Rauh  
Michael & Frances Ray  
Miss F. Reeder  
Mrs. Mari Kay Reeves  
Ms. Joyce Reibel  
Ms. Bethel Reimel  
Ms. Chris Reineke  
Mr. Nicholas Reitter  
Sol & Pam Resnikoff  
Ms. Joyce Phipps Rettew  
Lynn Rhoades  
Mrs. Theresa Riccardi  
Ms. Debra Ricci  
Miss Judy Rice  
Dr. Ruth Rich  
Ms. Betty Richards  
Robert Richmond, M.D.  
Mrs. Denise Richter  
Ms. Lyn Ridgeway  
Ms. June Rieber  
Mr. Howard Rigby, Jr.  
Mr. David Ringler  
Mrs. Susan Ristow



Ingeborg Rizo  
Mr. William Roemer, III  
Ms. Faith Rogers  
Ms. Ellice Ronsheim  
Ms. Arlene Rosborough  
Jill Rosenkranz  
Mr. Ronald Rosenkranz  
Ms. Teresa Roubicek  
Mrs. Mary Rowell  
Ms. Barbara Rubin  
Mr. William Rudolph  
Catherine Runnels  
Mrs. Bonnie Russell  
Dr. & Mrs. Thomas Ryan  
Heather and Bob Rykhus  
Ms. Lorraine Sacheck  
Mr. Robert Schachner  
Ms. Natalie Saltiel  
Alan Sanchez  
Sylvia Sanchez  
Rabbi Alvin Sandberg  
Ms. Tina Santopalo  
Mrs. Ann Saskiewicz  
Mr. Joel Scharf & Ms. Robin D. Naylor  
Mr. Erich Franz Schimps  
Ms. Rhoda Schlamm  
Miss Lita Schloss  
Ms. Janet Schmidt  
Ms. Dianna Schneider  
Mr. & Mrs. Schwartz  
Mrs. Patricia Scott  
Ms. Claire Searing  
Ms. Terry Sefcik  
Ms. Marilyn Seller  
Stephen & Elizabeth Shafer  
Miss Zoëanne Shafer  
Karen Shattuck, M.D.  
Mr. John W. Shaw  
Ms. Linda Shea  
Elizabeth Shearer  
Ms. Dorothy Shields  
Ms. Rosemary Shields  
Miss Deborah Green Shortridge  
Dr. Elizabeth Shulman, Ph.D.  
Mr. & Mrs. Harold Shuman  
Ms. Nancy Sieber  
Daniel Silver, MD  
Victor SimoesdeCarvalho  
Ms. Christl Singer  
Ms. Aileen Siracusa  
Ms. Karen Sjogren

Mr. Victor Skloff  
Ms. Kimberly Skrobiza  
Ms. Marianne Slaughter  
Mrs. Bonnie Smith  
Joann Smith  
Ms. Marietta Smith  
Ms. Mary Alice Smith  
Ms. Shelagh Smith  
Ms. Susan Conway Smith  
Ms. Sally Smithern  
Mr. Hugh Snyder  
Ingeborg Soens  
Mr. Peter Solt  
Keith Soohoo  
Ms. Karen Soverino  
Mr. Denis Spector  
Ms. Florence Spegele  
Ms. Martha Spiegelman  
Mr. Frank Spina  
Ms. Lyn Rosen Springut  
Mr. William Stack  
John & Denise Stebbins  
Mrs. Cheryl Ann Steffan  
Mr. & Mrs. George W. Stenberg  
Ms. Marily Sterling  
Ms. Michalle Stevenson  
Ms. M. Stewart  
Ms. Diana Stokes  
Ms. Wendy Stoltenberg  
Ms. Sylvia Storey  
Sean Stott  
Ms. Jill Strachan  
Faith & Piers Strailey  
Ms. Angela Stuebben  
Mrs. Roberta Swerdlow  
Ms. Raylene Swinock  
Ms. Lorrene Swisshelm  
Mr. Danny Sundell  
Mr. Allan Sutter  
Ms. Margery Tabb  
Mrs. April Taggart  
Ms. Dawn Tanis  
Mr. Michael Tedesco  
Mrs. Natalie Tenney  
Mrs. Nancy Thompson  
Ms. Teresa Thompson  
Ms. Tracy Thompson  
Mrs. Marion Threadcraft  
Thumbs Up Production  
Ms. Dawn Tiedemann  
Ms. Lillian Tintor  
Mrs. Carol Keilp Tobin

Miss Cecilia Tomaskovic  
Ms. Nancy Torowski  
Ms. Karen Trainor  
Mr. John Trevi  
Mr. Ronald Troia  
Mary True  
Ms. Gloria Turkin  
Cathy Van Wert  
Mrs. Guy Vaughan, Jr.  
Sharon Veale  
Laurie Veatch  
Mr. Theodor-Ron Vered  
Mrs. Florence Von Fremd Lynch  
Mr. Jon Von Leden  
Mr. Gene Wagner  
Mr. Ki Nam Wai  
Miss Lorraine Wallace  
Ms. Andrea Wallach  
Ms. Kathleen Walsh  
Ms. Shirley Walters  
Mr. & Mrs. Kenneth Watkins  
Mr. Matthew Watson  
Ms. Barb Watts  
Mrs. Anne Webb  
Ms. Jackie Wein  
Ms. Jean Weiser  
Adrienne Wesson  
Mr. Eugene West  
Weyerhaeuser  
Ms. Joanne White  
Ms. Lynn Whittier Lebolt  
Larry Wilder, DDS  
Ms. Susan Wilder  
Mrs. James Wiley  
Mr. Douglas Williams  
Ms. Patricia Williamson  
Ms. DeLores Wilson  
Delph Wilson  
Ms. Kathryn Winter  
Ms. Judith Winthrop  
Ms. Catherine Wiesman  
Ms. Diane Wise  
Ms. Gail Wolf  
Ms. Kathleen Wolney  
Ms. Anita Woods  
Dr. Thomas Wooldridge  
Mrs. Elizabeth Woolever  
Mrs. Ann Worrell  
Dr. & Mrs. Curtis Wushensky  
Miss Patricia Yasek  
Karlyn Yates-Mills  
Miss Ann Yazejian

Mr. Alan Yeater  
Mr. & Mrs. Irwin Yellowitz  
Mrs. Constance Yonan  
Ms. Debra Youngbear  
Ms. Mary Yunker  
Ms. Abbie Zabar  
Ms. Carolyn Zarcone  
Ms. Mary Zellmann  
Dagmar & Gene Zilinskas  
Ms. Mildred Zimmerman  
Ms. Mary Zink  
Ms. Arlene Zuckerman

### **Bequests and Memorials**

FACT would like to honor our supporters and their loved ones who continued their philanthropy to our work and cause through bequests and legacy gifts during our 2021 fiscal year:

### **Planned Giving and Bequests**

Mr. Raymond Barrier, FACT Supporter since 1984  
Charles Van Wick Brooks Charitable Trust  
Mr. & Mrs. Laurence Dufour, FACT Supporter since 1986  
Carol Weinstein  
Mrs. Mildred Lillis, FACT Supporter since 1998  
Joan M Seiger Trust  
Alex Shey and Lois Bates Shey Family Trust  
Miss Jeanne Templeton, FACT Supporter since 1986  
Mrs. Dorothy Thorndike, FACT Supporter since 1987  
Ms. Edna Weigand, FACT Supporter since 1985

### **Memorial or Honorarium Giving**

Alvin Brockway  
Miss Vicki Deisner  
Mr. Phillip Farber  
Richard & Jan Fensterer  
Ms. Teresa Galliher  
Dr. Barbara Ingersoll  
Jill Newburg  
Mr. Nathan Newbury, III  
Ms. Nancy Rollings  
Ms. Priscilla Trubin  
Dean and Debbie Zemel

# ON BEHALF OF ALL OF US AT FACT, WE THANK YOU FOR YOUR CONTUNUED, GENEROUS SUPPORT

## BOARD OF DIRECTORS

Darlene Oliver, Board Chair

Mark Bearce, Vice Chair

Jill Weinstein, Secretary

Robin Fitelson

John Hess

Kirsten Jurcek

Hubert Karreman

Elaine Madansky

Laura Rogers

Gail Tibensky



## FACT STAFF

Harry Rhodes, Executive Director

Samantha Gasson, Humane Farming Program Associate

Charlotte Isles, Development Associate

Madeleine Kleven, Safe and Healthy Food Program Associate

Larissa McKenna, Humane Farming Program Director

Steve Roach, Safe and Healthy Food Program Director

## VISION AND MISSION

**VISION:** All food-producing animals will be raised in a humane and healthy manner, and everyone will have access to safe and humanely-produced food.

**MISSION:** FACT advances our vision that all food-producing animals are raised in a humane and healthy manner. We accomplish this by supporting humane farmers, promoting policies that make foods from animals safe and healthy to eat, and helping consumers make informed food choices.

## CONTACT US

Food Animal Concerns Trust

3525 W. Peterson Ave, Suite 213

Chicago, IL 60659

(773) 525-4952

[www.foodanimalconcernstrust.org](http://www.foodanimalconcernstrust.org)

[www.keepantibioticsworking.org](http://www.keepantibioticsworking.org)



@foodanimalconcernstrust



@talk\_with\_fact



@foodanimalconcernstrust



Food Animal Concerns Trust (FACT)





*Local Color Farm and Fiber*



*BOTL Farm*